



BUSINESS PRO-FILE

TECHNOLOGY & INNOVATION STEEL

Hello!



TABLE OF CONTENTS

1. Company out-line
2. Our History
3. Organization
4. Business field
5. Holding facility
6. Environment, quality certificate
7. Our Located

1. Company Out line

- Company establishment : 29.07.2009
- Gross profit(2018) : 5 billion(₩)
- Headquarters / Plant1 : 259, Hamaho-gil, Poseung-eup, pyeongta-si, Gyeonggi-do, Republic of Korea, 1792
- Plant2 : 43, Pyeongtaekhang-ro 156beon-gil, Poseung-eup, Pyeongtaek-si, Gyeonggi-do, Republic of Korea
- Design team / Sales team : #3010, 25, Beopjo-ro, Yeongtong-gu, Suwon-si, Gyeonggi-do, Republic of Korea
- Employees : 36 (As of 2019.12.1)



Plant 1 (Pyeongtaek)



Plant 2 (Pyeongtaek)



Office (Suwon)

Headquarters

TiSTEEL

ARTRON

Joint development of Film

Patterned Lighting diffusion Film

Thermochromic Film

TiGLASS
Showroom

Design team
technical sales



2. Our History

2009

Cheil tisteel founded.
LG Chem / Provide Artron to Ottogi

2010

Provide Artron to LG hausys / LG Household
& Health Care / LG Electronics

2011 Supplies Art Metal Silver to

Thyssen Krupp korea

2012 Provide Artron for Samsung Electronics

2013 Start SuppliesArt Metal to Hyundai

2014 Start SuppliesArt Metal color to Hyundai

2015

Supplies Art Metal to KCC

Relocation of headquarters and plants1

2017 Securing Plant 2

2018 launched Global brand

2019 Supplies GLASS SKIN to

Thyssen Krupp korea

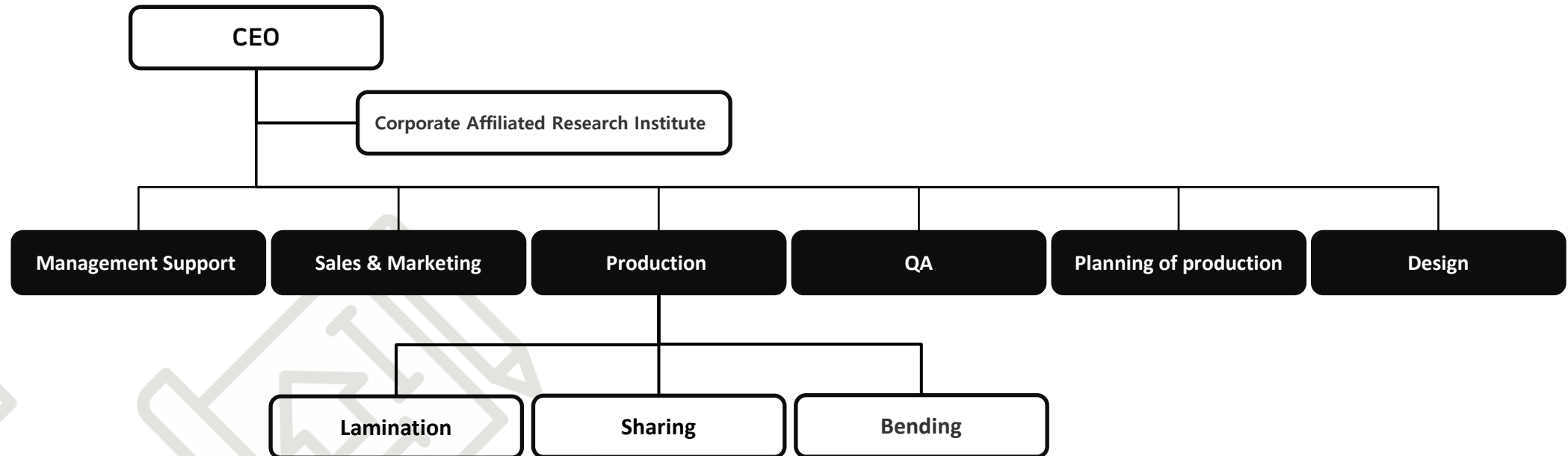
Opened a Design team

2020

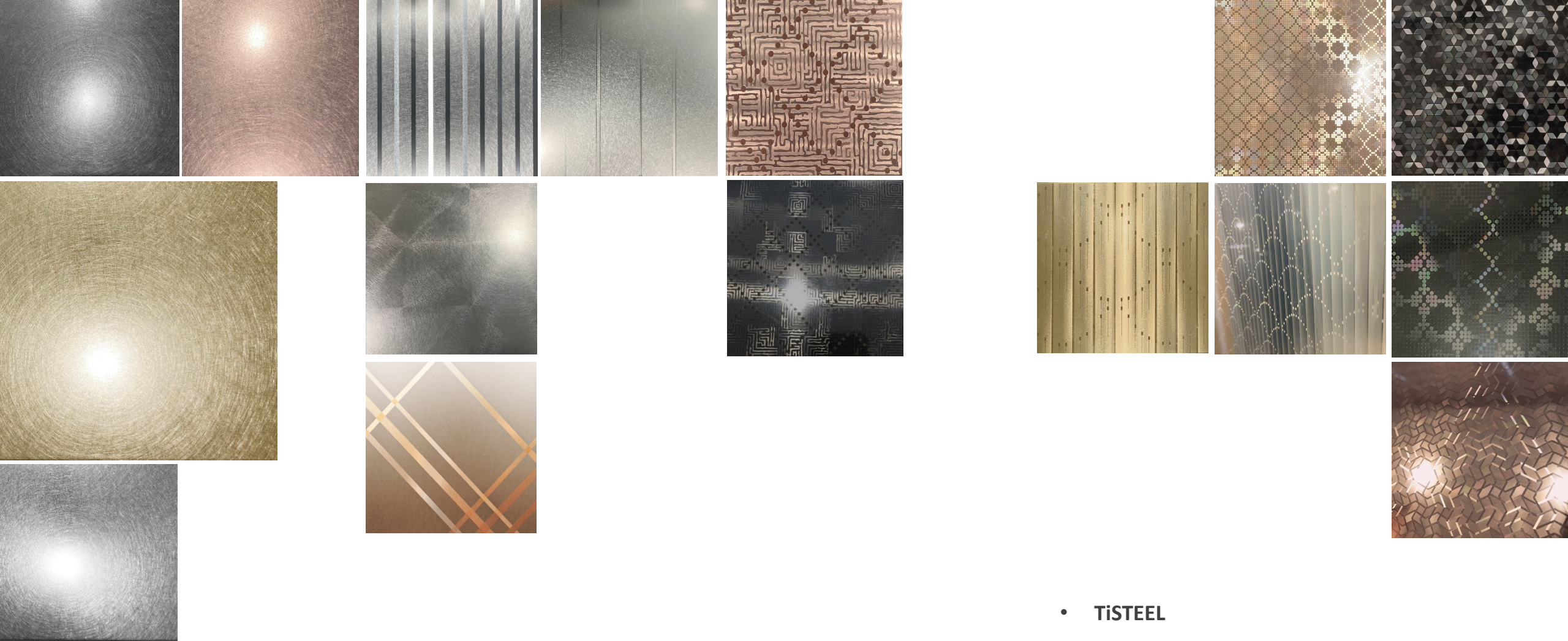
2020 launched Lighting Film

2021 Plant 2, Showroom Open

3. Organization



- Total staff: 35 (As of 2019.12.1)
- Executives : 4
- General Manage : 3
- Deputy General Manager : 1
- Manager : 3
- Blow of Assistant Manager: 24



4. Awesome product

- TiSTEEL
- ARTRON
- TiGLASS
- Joint development of Film
- Patterned Lighting diffusion Film
- Temperature-sensitive discoloration Film

TiSteel(Artmetal)

Innovative composite metal with Hairline, 3S Vibration, and Bead Blast textures, It is lighter than steel and has excellent dustproof and soundproofing.

It's a new material that realized the best interior function in the elevator.

Creating various effects with our own mold technology

- ▶ embody 100% of the metal texture
- ▶ (Hairline, 3S Vibration, Bead Blast and Mixed Ptt'n)
- ▶ Create Advanced Colors (Silver, Gold, Bronze, Black)
- ▶ 3D Realization (inlaid, Three-dimensional embossed)



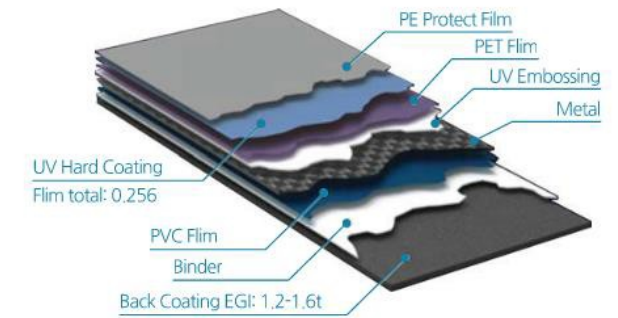
Premium interior and exterior materials(wall, Pillar).

Elevators, Escalator, Doors, Fire door, Electronics Finishing

Materials

Securing physical properties

- ▶ Delicate gloss and excellent surface protection coating
- ▶ Excellent surface properties such as chemical resistance, corrosion resistance, fouling resistant, weather resistance, etc.
- ▶ It has excellent processability such as cutting, bending, NCT, sheet metal, etc



ARTRON

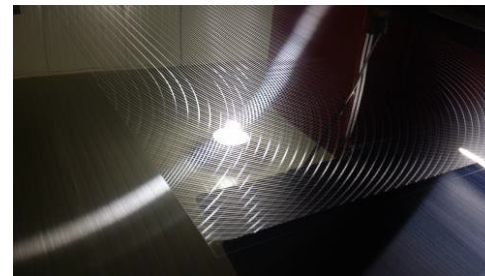
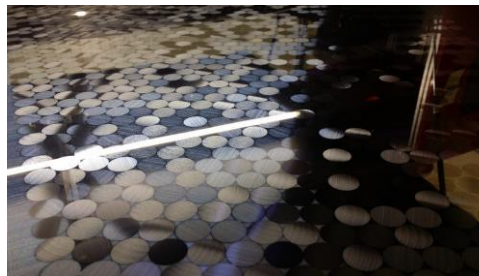
A state-of-the-art image expression method gives the stainless-steel surface a metallic luster. It has excellent decoration and post-processing properties.

Strength

- ▶ A variety of high-quality colors are implemented.
- ▶ Image processing for three-dimensional expression
- ▶ It can be used permanently without deformation in water or heat
- ▶ Expressed precision pattern with stainless steel texture

Securing physical properties

- ▶ Premium interior and exterior materials(wall, Pillar)
- ▶ Advanced elevators, escalator finishes
- ▶ Advanced doors, Fire door finishes
- ▶ Electronics Finishing Materials



TiGlass

It is a finishing material for elevators using tempered glass, which is not only a design but also a strong product.

It can be applied to elevator cabin walls, cabin doors, hall doors, fire doors, etc.

Strength

- ▶ Luxury of tempered glass and aluminium
- ▶ Various applications such as printing, film, fabric, etc.
on the back of reinforced glass
- ▶ Variety of Aluminum Colors

Securing physical properties

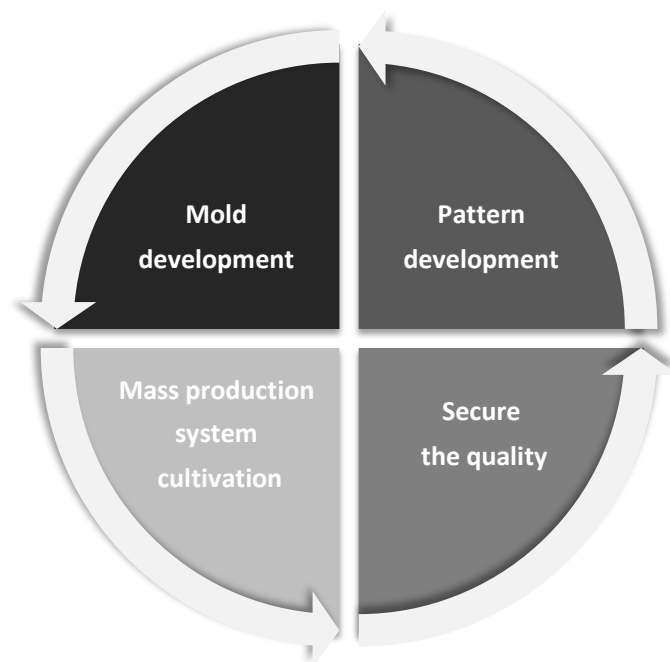
- ▶ High impact resistance due to tempered glass
- ▶ Reinforced glass and aluminum are integrated and resistant to side impact



Certificate of a patent

Film joint development

We jointly develop the planning, development, and mass production stages for new VCM products with actual customers to meet the needs with technology accumulated over many years. Matching products can be brought to market in the shortest time.



Facilities for retaining the processing of film lamination



Material	Minimum quantity	Daily production volume
STS, EGI	5t	700sheets
Thickness	Width	Length
0.8~1.5t	1,219mm	2,438~3,000mm

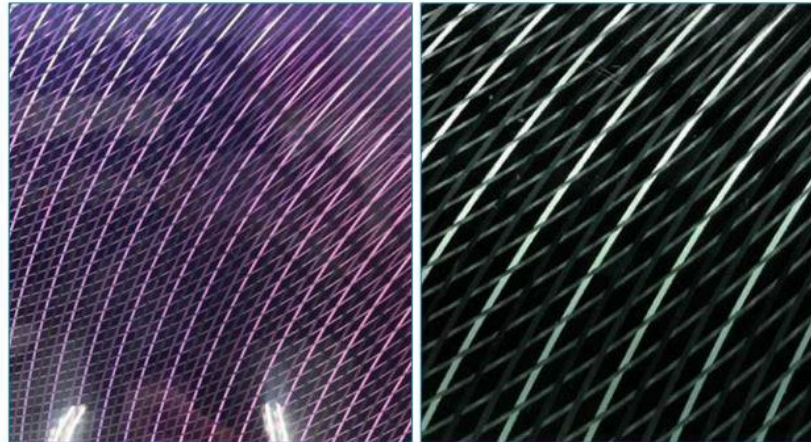
Patterned Lighting diffusion Film

After attaching a film to a transparent panel with a thickness such as tempered glass or acrylic, the LED is irradiated from the side to provide a uniform overall material.

It is a film technology that can increase the illuminance in a specific area while maintaining the illuminance.

Strengths due to possessing film mold technology

- ▶ Light guide cell capable of absorbing the light emitted through the LED stably
- ▶ Light guide pattern design suitable for fine pattern
- ▶ All-in-one mold with mixed fine and light guide pattern



Light guide pattern



5. applications Hyundai Elevator Co., Ltd.

Model name : Vivaldi



Model name : New Yzer



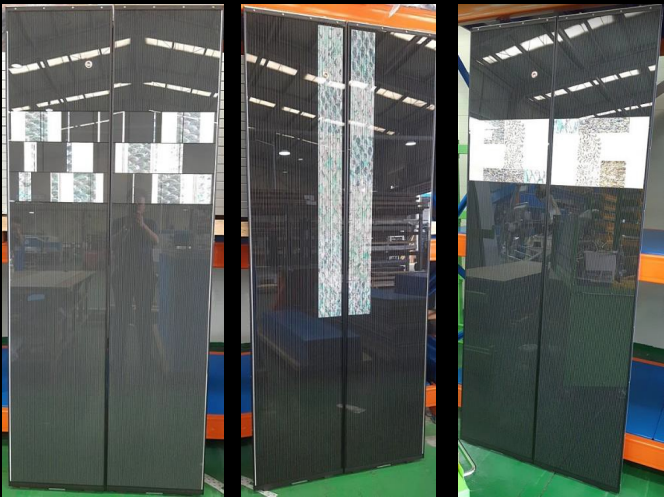
•Tissenkrupp Elevator Korea



← (Silk-screen print)



↑ Using other material panel by glass door frame



↑ (Silk-screen print + mother-of-pearl work)

Samsung Electronics Co., Ltd.



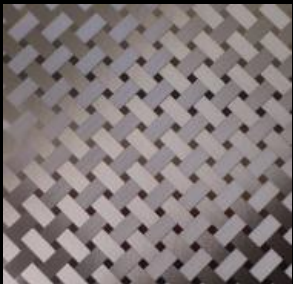
← Refrigerator
Surface Material



← Kimchi refrigerators
Surface Material

Apply list

Product	vendor	Product	period
TiSTEEL	Tissenkrupp Elevator Korea	Hi-touch	2011 ~ up to now
TiSTEEL	Hyundai Elevator	New yzer	2014 ~ up to now
TiSTEEL	Hyundai Elevator	Vivaldi	2018~ up to now
TiGLASS	Tissenkrupp Elevator Korea	Glass Door	2019 ~ up to now
ARTRON	KCC (for Samsung)		2014 ~ up to now



Hi-touch - (Plaid)



Hi-touch - (Rain)



New yzer-(Cube)



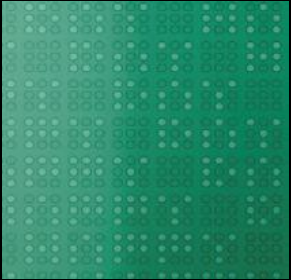
New yzer-(Herb)



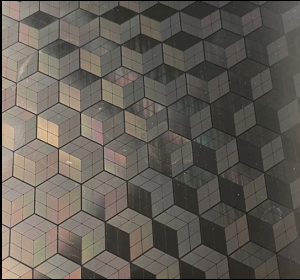
New yzer-(Stripe)



Vivaldi - (Soslgeum)



Vivaldi - (Dots)



Vivaldi - (Hexagon)

6. Equipment List

TiSTEEL Production capacity

Material	Minimum workload	Daily production volume
STS, EGI	1 ton	15 ton
Thickness	Width	length
0.8~2.0t	1,219mm	2,438~3,000mm



Lamination (Unit 1) : ₩ 2 billion



Lamination (Unit 2) : ₩ 2billion




4 side Bending machine
(Unit 1) : ₩ 1.4 billion



shearing machine
(Unit 1) : ₩ 0.3 billion

7. Certification



인증번호: RAQ1143

Certificate of Registration
품질경영시스템 인증서

(주)제일티스틸
경기도 평택시 포승읍 하만호길 259


적용표준
KS Q ISO 9001:2015/ISO 9001:2015

인증범위
엘리베이터용, 건축용 부품의 라미네이팅

위와 같이 품질경영시스템 표준에 적합함이
한국경영인증원에 의해 인증되었음을 증명함.

2019년 2월 13일

인증승인일자 : 2019. 2. 13. 인증유효일자 : 2022. 2. 12.







한국경영인증원 

한국경영인증원
서울특별시 영등포구 영신로77길 15(영등포구) 15층
KAS 1515-1515 / F 1515-1515
T 02-6095-9511 / F 02-6095-0214

* (주)제일티스틸의 품질경영시스템(ISO 9001)에 대한 인증(인증번호: KAS-QC-17)은 2019년 2월 13일
* KAS는 국제인증협력기구의 국제인증심사원(인증원)에 의해 인증기관에 의해 인증되었음을 증명합니다.
* 인증수행원(KAS-QC-17)은 한국경영인증원(KAS)에 의해 인증되었습니다.



Our Located

- **Headquarters / Plant1 :**
259, Hamaho-gil, Poseung-eup, pyeongta-si, Gyeonggi-do,
Republic of Korea, 1792
- **Plant2 :** 43, Pyeongtaekhang-ro 156beon-gil, Poseung-eup,
Pyeongtaek-si, Gyeonggi-do, Republic of Korea
- **Design team / Sales team :** #3010, 25, Beopjo-ro,
Yeongtong-gu, Suwon-si, Gyeonggi-do, Republic of Korea



Thank You!

(주)제일티스틸

본사/1공장 : 17962 경기도 평택시 포승읍 하만호길 259
2공장 : 17959 경기도 평택시 포승읍 평택항로 156번길 43
수원사무소 : 16514 경기도 수원시 영통구 법조로 25 광교에스케이뷰레이크 30

Tel. +82-31-681-7489(본사) / +82-31-548-2363(수원)

Fax. +82-31-682-7489(본사) / +82-31-548-2364(수원)

E-mail. cheiltisteel@naver.com Web. <http://www.cheiltisteel.com>

CheilTisteel Co., Ltd

Head/Plant1 : 259, Hamanho-gil, Poseung-eup, Yeongtaek-si,
Gyeonggi-do, Republic of Korea, 17962

Tel. +82-31-681-7489 Fax. +82-31-682-7489

E-mail. cheiltisteel@naver.com Web. <http://www.cheiltisteel.com>